

VERTICAL WALL MOUNTED FLAGPOLES

STANDARD BAARTOL FITTINGS:

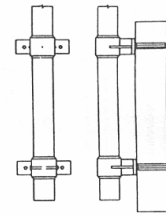
GOLD ANODIZED ALUMINUM BALL (SIZED TO MATCH POLE BUTT DIAMETER)
 ALL ALUMINUM REVOLVING TRUCK
 5/16" POLYPROPYLENE HALYARDS WITH WIRE SPLICERS
 CHROME PLATE SWIVEL SNAPS WITH VINYL SNAP COVERS
 9" CAST ALUMINUM CLEAT WITH SCREWS
 STAINLESS STEEL MOUNTING BOLTS WITH PIPE FERRULES AND
 STEEL BACK-UP PLATES AS REQUIRED.
 FLAGPOLES HAVE CLOSED BOTTOM WITH WEEP HOLE

OPTIONS AVAILABLE:

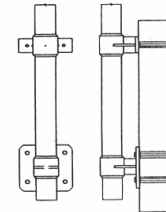
WINGSPREAD EAGLE FINIAL TOP (IN LIEU OF BALL)
 INTERNAL HALYARD (WINCH OPERATED OR CAM ACTION CLEAT-PAGE 17
 ARE AVAILABLE IN 5" BUTT DIA. FLAGPOLES OR LARGER.)
 CAST ALUMINUM CLEAT BOX (PADLOCK OR CYLINDER LOCK-PAGE 18 AND 19)
 HALYARD PROTECTOR 5'-0" OR 8'-0" USED IN CONJUNCTION
 WITH CLEAT BOX (PAGE 18 AND 19)
 FINISHES:204-R1 OR 215-R1 CLEAR ANODIZED
 311-E LIGHT BRONZE,312-E MEDIUM BRONZE,313-E DARK BRONZE
 335-E BLACK - DURANODIC HARDCOATING
 LUSTRAPOLY PAINT FINISH:(CAN MATCH ANY COLOR)

* - AVAILABLE WITH VM-4 AND VM-5 BRACKETS ONLY

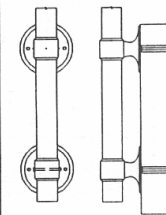
OVERALL LENGTH	BUTT DIAMETER	TOP DIAMETER	WALL THICKNESS
15'-0" 1-PIECE	4"	2-3/8"	.188"
* 20'-0" 1-PIECE	3"	2"	.125"
20'-0" 1-PIECE	4-1/2"	2-7/8"	.188"
23'-0" 1-PIECE	5"	3-1/4"	.188"
28'-0" 1-PIECE	5-1/2"	3-1/2"	.188"
33'-0" 1-PIECE	6"	3-1/2"	.188"
38'-6" 1-PIECE	7"	3-1/2"	.188"
44'-0" 2-PIECE	8"	3-1/2"	.188"



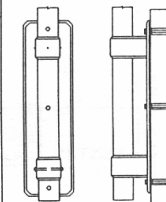
VM-2



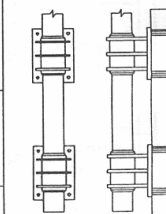
VM-3



VM-4



VM-5



VM-8

WATTS#: 1-800-537-4143
 THE BAARTOL COMPANY PHONE#: 1-419-673-0758
 FAX:# 1-419-673-1409