

CONE-TAPERED ALUMINUM TILTING SHOE BASE MOUNT

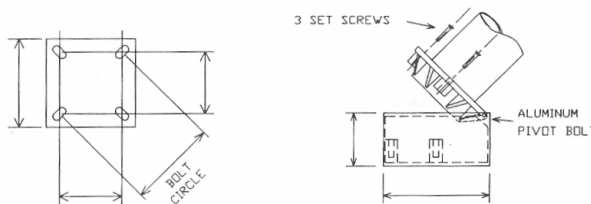
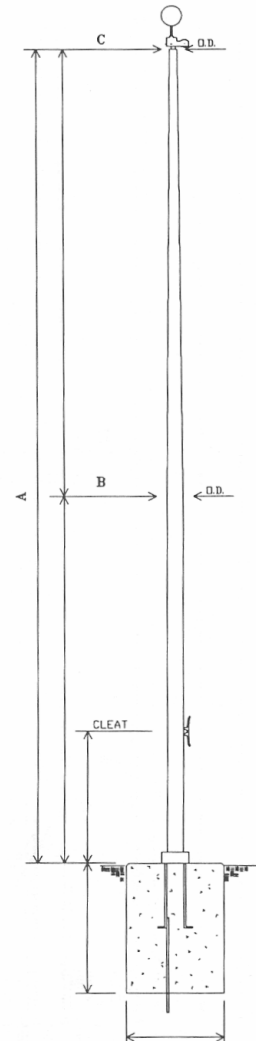
STANDARD BAARTOL FITTINGS:

- GOLD ANODIZED ALUMINUM BALL (SIZED TO MATCH POLE BUTT DIAMETER)
- ALL ALUMINUM REVOLVING TRUCK
- 5/16" POLYPROPYLENE HALYARD WITH WIRE SPLICERS
- CHROME PLATED BRONZE SWIVEL SNAPS WITH VINYL SNAP COVERS
- 9" CAST ALUMINUM CLEAT WITH SCREWS
- 4 - ANCHOR BOLTS
- FOUNDATION DEPTH IS TEN PERCENT (10%) OF EXPOSED HEIGHT OF POLES-
- FOUNDATION DIAMETER IS FIVE TIMES POLE BUTT DIAMETER

OPTIONS AVAILABLE:

- WINGSPREAD EAGLE FINIAL TOP (IN LIEU OF BALL)
- INTERNAL HALYARD (WINCH OPERATED OR CAM ACTION CLEAT-PAGE 17 WITH 5" AND 6" BUTT DIAMETER FLAGPOLES ONLY.)
- CAST ALUMINUM CLEAT BOX (PADLOCK OR CYLINDER LOCK-PAGE 18 AND 19)
- HALYARD PROTECTOR 5'-0" OR 8'-0" USED IN CONJUNCTION WITH CLEAT BOX
- FINISHES: 204-R1 OR 215-R1 CLEAR ANODIZED
- 311-E LIGHT BRONZE, 312-E MEDIUM BRONZE, 313-E DARK BRONZE
- 335-E BLACK - DURANODIC HARDCOATING
- LUSTRAPOLY PAINT FINISH:(CAN MATCH ANY COLOR)

A. OVERALL AND EXPOSED HEIGHT	B. BUTT DIAMETER INCHES	C. TOP DIAMETER INCHES	WALL THICKNESS INCHES	MAX. WIND SPEED UNFLAGGED	MAX. WIND SPEED FLAGGED	STANDARD FLAG SIZE
20'-0" 1-PIECE	4"	2"	.125"	107 MPH	84 MPH	3' X 5'
20'-0" 1-PIECE	5"	3"	.125"	166 MPH	102 MPH	3' X 5'
20'-0" 1-PIECE	5"	3"	.188"	217 MPH	138 MPH	3' X 5'
25'-0" 1-PIECE	4"	2"	.125"	79 MPH	64 MPH	4' X 6'
25'-0" 1-PIECE	5"	3"	.125"	93 MPH	76 MPH	4' X 6'
25'-0" 1-PIECE	5"	3"	.156"	113 MPH	85 MPH	4' X 6'
30'-0" 1-PIECE	4"	2"	.125"	64 MPH	52 MPH	5' X 8'
30'-0" 1-PIECE	5"	3"	.125"	72 MPH	61 MPH	5' X 8'
30'-0" 1-PIECE	5"	3"	.156"	80 MPH	67 MPH	5' X 8'
30'-0" 1-PIECE	5"	3"	.188"	89 MPH	73 MPH	5' X 8'
30'-0" 1-PIECE	6"	3-1/2"	.156"	120 MPH	79 MPH	5' X 8'
30'-0" 1-PIECE	6"	3-1/2"	.188"	144 MPH	92 MPH	5' X 8'
30'-0" 1-PIECE	6"	3-1/2"	.250"	171 MPH	115 MPH	5' X 8'
35'-0" 1-PIECE	5"	3-1/2"	.156"	66 MPH	56 MPH	5' X 8'
35'-0" 1-PIECE	6"	3-1/2"	.156"	80 MPH	66 MPH	5' X 8'



THE BAARTOL COMPANY INC.

WATTS#: 1-800-537-4143
PHONE#: 1-419-673-0758
FAX#: 1-419-673-1409