

COUNTER-BALANCED FLAGPOLES

A. OVERALL AND EXPOSED HEIGHT	B. BUTT DIAMETER	C. TOP DIAMETER	WALL THICKNESS
20'-0" 1-PIECE	5"	3-1/2"	.188"
25'-0" 1-PIECE	5"	3-1/2"	.188"
25'-0" 1-PIECE	5-1/2"	3-1/2"	.188"
30'-0" 1-PIECE	5-1/2"	3-1/2"	.188"
30'-0" 1-PIECE	6"	3-1/2"	.188"
35'-0" 1-PIECE	6"	3-1/2"	.188"
35'-0" 1-PIECE	7"	3-1/2"	.188"
40'-0" 2-PIECE	7"	3-1/2"	.188"
40'-0" 2-PIECE	8"	3-1/2"	.188"
50'-0" 3-PIECE	8"	3-1/2"	.188"
50'-0" 3-PIECE	10"	4"	.188"

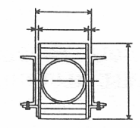
* 60'-0" AND HIGHER AVAILABLE UPON REQUEST

STANDARD BAARTOL FITTINGS:

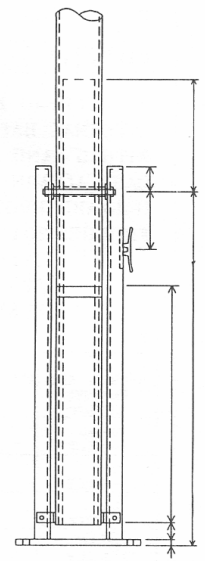
- GOLD ANODIZED ALUMINUM BALL (SIZED TO MATCH POLE BUTT DIA.)
- ALL ALUMINUM REVOLVING TRUCK
- 5/16" POLYPROPYLENE HALYARD WITH WIRE SPLICERS
- CHROME PLATED BRONZE SWIVEL SNAPS WITH VINYL SNAP COVERS
- 9" ALUMINUM CLEAT WITH SCREWS
- 4 - ANCHOR BOLTS - FOUNDATION DEPTH IS TEN PERCENT (10%) OF EXPOSED HEIGHT - FOUNDATION DIAMETER IS FIVE TIMES THE FLAGPOLE BUTT DIAMETER.
- ALL STEEL COUNTER-BALANCED TILTING ARRANGEMENT

OPTIONS AVAILABLE:

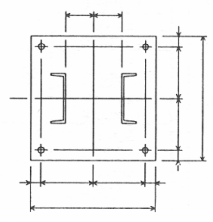
- WINGSREAD EAGLE FINIAL TOP (IN LIEU OF BALL)
- INTERNAL HALYARD:
(WINCH OPERATED OR CAM ACTION CLEAT-PAGE 17)
- CAST ALUMINUM CLEAT BOX:
(CYLINDER LOCK OR PADLOCK STYLE-PAGE 18 AND 19)
- FINISHES: 204-R1 OR 215-R1 CLEAR ANODIZED
 - 311-E LIGHT BRONZE, 312-E MEDIUM BRONZE, 313-E DARK BRONZE
 - 335-E BLACK DURANODIC HARDCOATING
 - LUSTRAPOLY PAINT FINISH:(CAN MATCH ANY COLOR)



SECTION "CC"



SECTION "AA"



SECTION "BB"

THE BAARTOL COMPANY INC.

WATTS#: 1-800-537-4143
 PHONE#: 1-419-673-0758
 FAX#: 1-419-673-1409